



HOA Manager, Amanda Miller  
 amiller@Lowdernewhomes.com  
 334-300-5325  
 Office Hours Vary:  
 Monday-Friday  
 HOA Office: 8800 Lodge Drive  
**woodlandcreekhoa.com**

CALENDAR OF EVENTS

**NOVEMBER 6-10**  
**WINTER COAT & BLANKET DRIVE**

**DECEMBER 1**  
**PHOTOS WITH SANTA**

**DECEMBER 10-16**  
**CHRISTMAS DECORATING CONTEST**

Thank you 2024 Fall Festival Volunteers!  
Our events would not be possible without all of you!



THANK YOU & CONGRATS

Thank you & congratulations to our 2024 Hay Bale creators! Woodland Creek won 1st Place in the Neighborhood category! There's still time to vote for us to win People's Choice. Head on over to the Town of Pike Road Facebook page to like the photo. Most likes wins!

2023 Hay, Look at Us! Hay Bale Decorating Contest  
Presented by the Town of Pike Road Neighborhood Leaders, an ENHANCE initiative committee



**NIGHT SECURITY**  
**Patrol Hours: 10pm-6am**  
**334-224-7225**

**This is a non-emergency #.**  
**Call 911 if there**  
**is an emergency.**



WOODLAND CREEK HOA IN PARTNERSHIP WITH MID ALABAMA COALITION FOR THE HOMELESS

# COATS, HATS, GLOVES, & BLANKETS DRIVE

## NOVEMBER 6-10

DROP OFF BOXES LOCATED @ THE LODGE

ALL AGES & SIZES DESIRED

CLEAN. NEW OR GENTLY USED ONLY



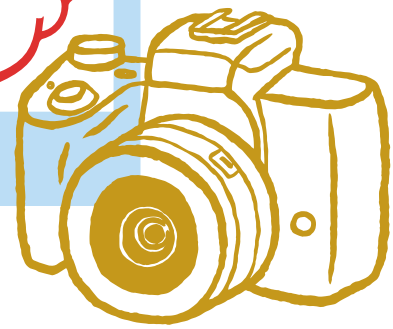
JOIN US FOR  
**PICS WITH  
OL' ST. NICK**

**FRIDAY, DECEMBER 1**

**4PM-7PM**

**SIGN UP DETAILS**

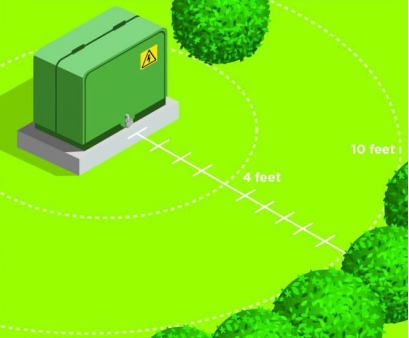
**TO COME**



Never touch, climb or play on pad-mounted transformers. Never put fingers, sticks or other objects through cracks in the transformer.



Keep areas surrounding the pad-mounted transformer clear so that workers can safely maintain transformers as needed. Keep shrubs and structures at least 10 feet away from the transformer doors and 4 feet away from the sides.



Never dig near a pad-mounted transformer. They are surrounded by underground cables. Hitting the cable could result in electrical shock or disruption of service. Always dial 8-1-1 before you dig.



Report problems. If you notice anything amiss, like an unlocked transformer or one that has been damaged, please contact us immediately.



**FYI**

These green boxes are **not** toys. Please educate your children, to ensure that they're not using these to practice their parkour skills when waiting on the bus.

## Did You Know?

There are right and wrong ways to park your vehicle on the street.

**INCORRECT**



**CORRECT**

### ALABAMA CODE TITLE 32. MOTOR VEHICLES AND TRAFFIC § 32-5A-138

**(A) EXCEPT AS OTHERWISE PROVIDED IN THIS SECTION, EVERY VEHICLE STOPPED OR PARKED UPON A TWO-WAY ROADWAY SHALL BE SO STOPPED OR PARKED WITH THE RIGHT-HAND WHEELS PARALLEL TO AND WITHIN 18 INCHES OF THE RIGHT-HAND CURB OR EDGE OF THE ROADWAY.**





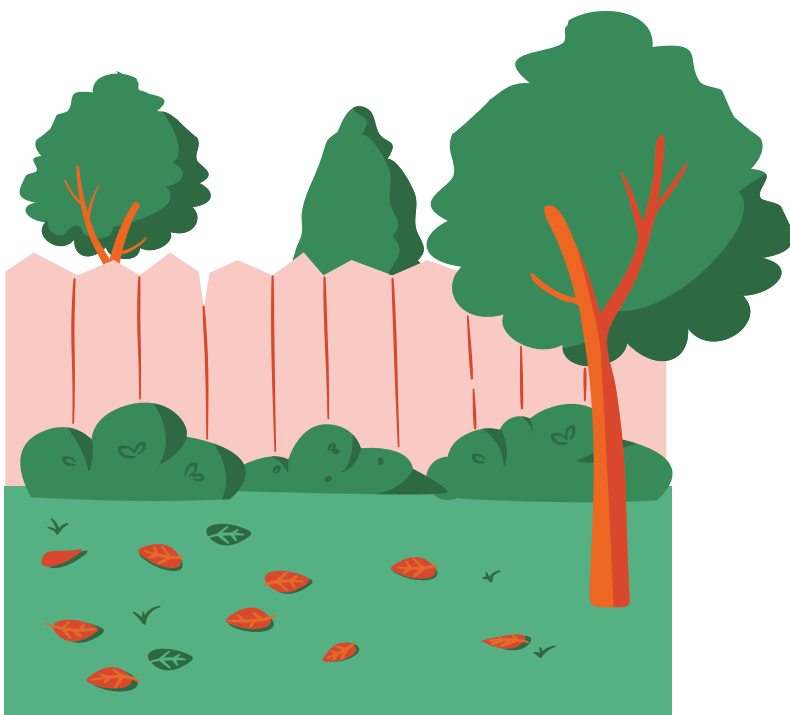
## Stay Tuned

The HOA will be holding Board & Committee Informational Meetings during the first couple months of 2024. Find out more about the roles that homeowners will need to fill in order to have a successful HOA once the developer has transitioned out of the neighborhood.

---

### Fall is the perfect time of year to focus on your curb appeal.

Need to make updates to your front flower bed? Ready to refresh the paint on your home? Don't forget to submit an ARC request for pre-approval. Turnaround time on requests is typically around 2 weeks. The HOA Manager will be happy to walk you through the process!



### Speaking of curb appeal-

Cooler weather usually means that you don't have to mow as often. But don't forget about yard maintenance completely. This is the best time of year to start applying pre-emergents, that will help cut down on weeds next summer. Don't forget to bag your leaves as they start to fall more rapidly. Bagged leaves and grass should not be placed at the curb until the evening before trash day.