

Woodland Creek HOA

# Fall 2022 Newsletter

[www.woodlandcreekhoa.com](http://www.woodlandcreekhoa.com)



## HOA MANAGER

Amanda Miller

[amiller@Lowdernewhomes.com](mailto:amiller@Lowdernewhomes.com)

334-300-5325

Office Hours:  
Monday-Friday  
12pm-5pm

HOA Office:  
8800 Lodge Drive

## CALENDAR OF EVENTS

OCTOBER 1:

Neighborhood Wide  
Yard Sale

OCTOBER 22:

Halloween Extravaganza

DECEMBER 3:

Christmas Spectacular

## IMPORTANT NUMBERS

Animal Control/Humane  
Society & Shelter  
334-409-0622

Sheriff's Office Non-Emergency  
334-832-4980

AmWaste for Trash Pickup  
334-625-1700

## NIGHT SECURITY

Patrol Hours: 10pm-6am

334-312-7936

This is a non-emergency #.  
Call 911 if there  
is an emergency.



Weather in Alabama can be unpredictable.

We may see rain every day for weeks at a time.

This can make it harder to mow your lawn, but it's the **perfect time to trim those bushes and trees, as well as provide regular maintenance to your flowers beds.**



Please remember to bag your grass clippings and place them at the curb on your **trash day**. Do not blow grass clippings into the street. It is not only against the covenants, but it is also harmful and damaging to the storm water drainage system.



**THE STRAW FARM**

CLEAN • SUSTAINABLE • LOCALLY SOURCED

**"WE VALUE OUR CENTRAL ALABAMA NEIGHBORS"  
...SO LET US HELP YOU MAINTAIN YOUR YARD WITH THE BEST LONG NEEDLE PINE STRAW AVAILABLE.**

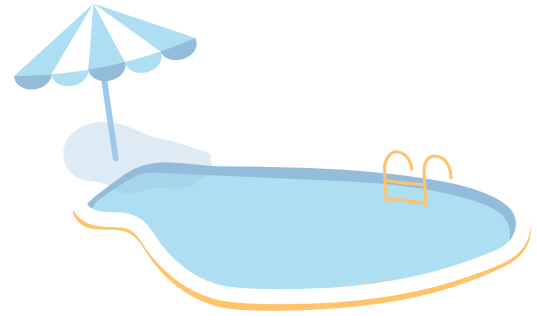
**TAKE 5% OFF  
THE TOTAL  
PLUS WE WILL MAKE  
A 5% DONATION TO A  
GREAT LOCAL CAUSE.**

WE HAVE VERY AFFORDABLE DELIVERY AND INSTALLATION.

**300 PIKE RD  
PIKE, ROAD, AL 36064  
334-403-5668**

WWW.STRAW.FARM  
LIKE OUR FACEBOOK PAGE FOR SEASONAL DEALS.  
[HTTPS://WWW.FACEBOOK.COM/STRAWFARMER/](https://www.facebook.com/strawfarmer/)

# LAST POOL DAY: September 25



## POOL HOURS

Monday-Saturday

9am-8pm

Sunday

9am-6pm

The HOA receives calls weekly regarding residents of the neighborhood not cleaning up after their dogs. It is so easy to clean up your dog's poop- all you have to do is carry a plastic bag with you, or visit one of our Dogipot waste stations to grab a bag. Since dogs are NOT allowed off leash, you should always be with your dog when they're doing their business, and be readily available to clean up after them.

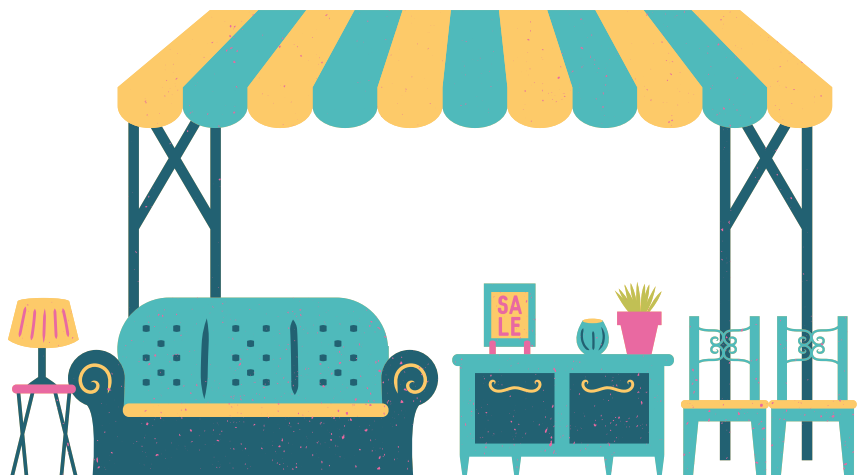


**YOUR DOG,  
YOUR RESPONSIBILITY!**

# NEIGHBORHOOD WIDE YARD SALE

**Saturday, October 1  
7am-11am**

You do not have to register to participate.  
HOA will advertise in the local paper.





# **HALLOWEEN EXTRAUAGANZA**

Please join us on  
**Saturday, October 22**  
**3pm-5pm**  
At the Woodland Creek Lodge

We will have a food truck set up in the parking lot, tons of games and candy up for grabs, as well as a cake walk going on throughout the entire event!

**\*Please note- we will forgo the costume contest this year.**



---

## **CHRISTMAS SPECTACULAR**

**Saturday, December 3, 2022**

Mark your calendars and stay tuned for the details.

We will also be having our Christmas Lights Decorating Contest again this year, details to come.

